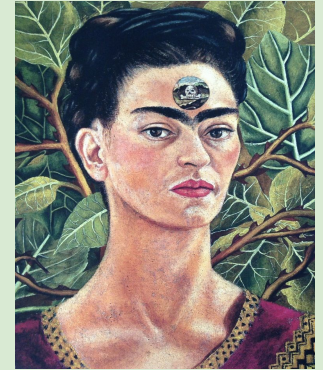


A. Types of Art	Description
<b>Assemblage</b>	The use of 3D, non-art materials and found objects in artwork.
<b>Figurative</b>	Art which depicts recognisable images of the world around us.
<b>Installation</b>	In Installation art the individual elements are arranged within a given space and can be viewed as a single work.
<b>Earth Art</b>	A form of art that uses natural elements to create original work.

B. Artist	Information
<b>Kehinde Wiley</b>	American born artist who was commissioned to produce a portrait of the former President of America
<b>Frida Kahlo</b>	Mexican born artist who was married to the muralist Diego Rivera. Frida painted many self-portraits throughout her career.
<b>Hans Holbein the Younger</b>	German born artist and printer who is considered one of the best portrait artists of the 16 <sup>th</sup> century.

## C. Analysis : Use keywords to analyse each portrait in this section

Composition Media Technique Environment Mood Tone Form Social Formal Colour Realistic Impression Pose Movement Natural Abstract



D. 2D Media	Description
<b>Pastel</b>	A <b>pastel</b> is an art medium in the form of a stick, consisting of powdered pigment and a binder.
<b>Charcoal</b>	Charcoal is often used by artists for their versatile properties, such as the rough texture that leaves marks less permanent than other Visual arts media.
<b>Conté</b>	<b>Conté crayons/sticks</b> are a drawing medium composed of compressed powdered graphite or charcoal mixed with a wax or clay base, square in cross-section.
<b>Ink</b>	<b>Ink</b> is a liquid or paste that contains pigments or dyes and is used to colour a surface to produce an image, text, or design.
<b>Biro</b>	A <b>ballpoint pen</b> , also known as a <b>biro</b> or <b>ball pen</b> , is a pen that dispenses ink (usually in paste form) over a metal ball at its point.
<b>Water colour</b>	<b>Water colour</b> is a painting method in which the paints are made of pigments suspended in a water-based solution.
<b>Acrylic</b>	<b>Acrylic paint</b> is a fast-drying paint made of pigment suspended in acrylic polymer emulsion, which are water soluble.
<b>Impasto</b>	<b>Impasto</b> is a technique used in painting, where paint is laid on an area of the surface in very thick layers, usually thick enough that the brush or painting-knife strokes are visible.